

PROTECTING MATERNITY CARE PROVIDERS DURING COVID-19 IS ESSENTIAL FOR THE HEALTH OF MOTHERS AND BABIES



Maternity care providers have the right to full access for all personal protective equipment (PPE), sanitation and a safe and respectful working environment



Based on UNFPA and WHO technical guidelines
For more information read the Covid-19 Technical Brief for Maternity Services:



<https://www.unfpa.org/resources/covid-19-technical-brief-maternity-services>



WOMEN WITH SUSPECTED COVID-19 NEED TO BE PROVIDED WITH A SURGICAL FACEMASK AND TREATED IN A DEDICATED TREATMENT AREA SEPARATE FROM OTHER PATIENTS, WHERE POSSIBLE



If your country has community transmission of COVID-19, all patients, companions and women who present for care should wear a face mask



Based on UNFPA and WHO technical guidelines
For more information read the Covid-19 Technical Brief for Maternity Services:



<https://www.unfpa.org/resources/covid-19-technical-brief-maternity-services>

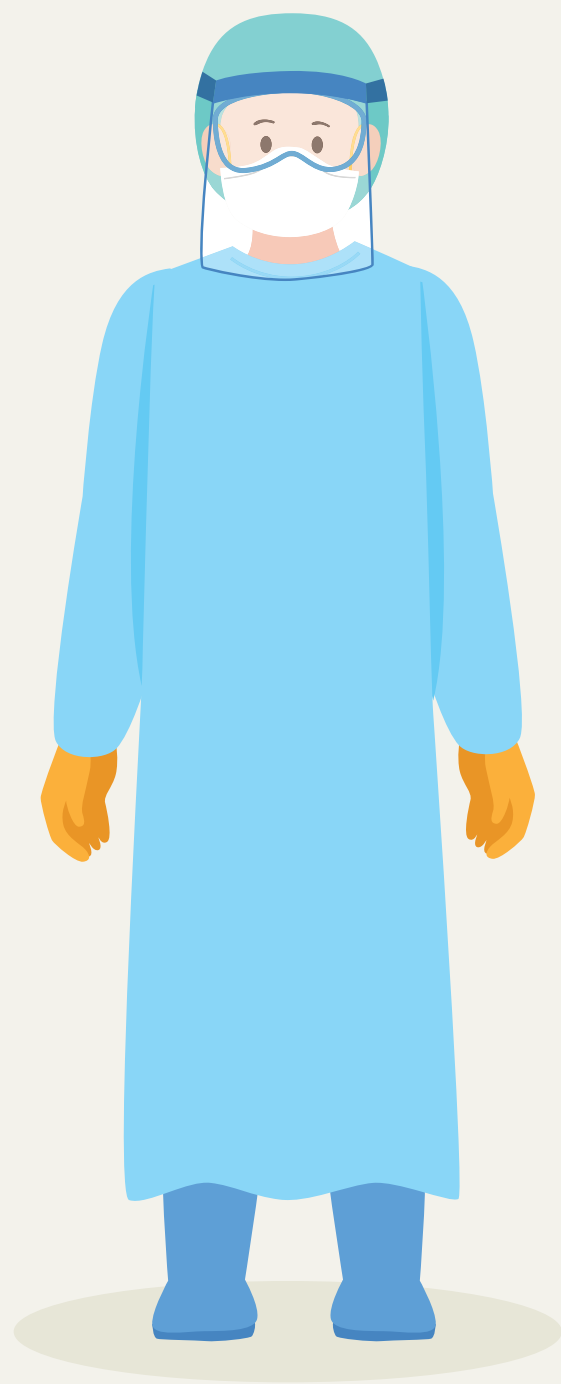


Australian Aid 

Supported by the Australian Government

IF YOU ARE A MATERNITY HEALTH WORKER DELIVERING CARE TO WOMEN **WITHOUT** SYMPTOMS OF COVID-19 IN A HEALTH FACILITY

Wear personal protective equipment (PPE) for all patient contact if enough PPE is available in the health facility, and use individual judgement to limit the exposure risk by the maternity care provider



Wear gloves and a plastic apron during the delivery of care before birth and during first stage of labour



Wear a surgical mask, plastic apron, eye protection and gloves during the second and third stage of labour



IF YOU ARE A MATERNITY HEALTH WORKER DELIVERING CARE TO WOMEN WITH SUSPECTED OR CONFIRMED CASES OF COVID-19 IN A HEALTH FACILITY, THE FOLLOWING PERSONAL PROTECTIVE EQUIPMENT (PPE) NEEDS TO BE WORN AT ALL TIMES



A long-sleeved gown



Surgical mask (for all patient interaction) or an N95/P2 mask during other procedures



Eye protection



Gloves



Based on UNFPA and WHO technical guidelines
For more information read the Covid-19 Technical Brief for Maternity Services:



<https://www.unfpa.org/resources/covid-19-technical-brief-maternity-services>



IF YOU ARE A HEALTH WORKER PREPARING FOR THE EMERGENCY TRANSFER OF PREGNANT WOMEN



Prepare transport equipment and drugs in anticipation of medical emergencies that may occur en-route



Ensure all transport staff are provided with N95 respirators (where available) or surgical masks as a secondary option. Ensure all transport staff wear personal protective equipment (PPE) prior to transport



Put on a surgical mask for the patient during transport (if not done on facility admission)



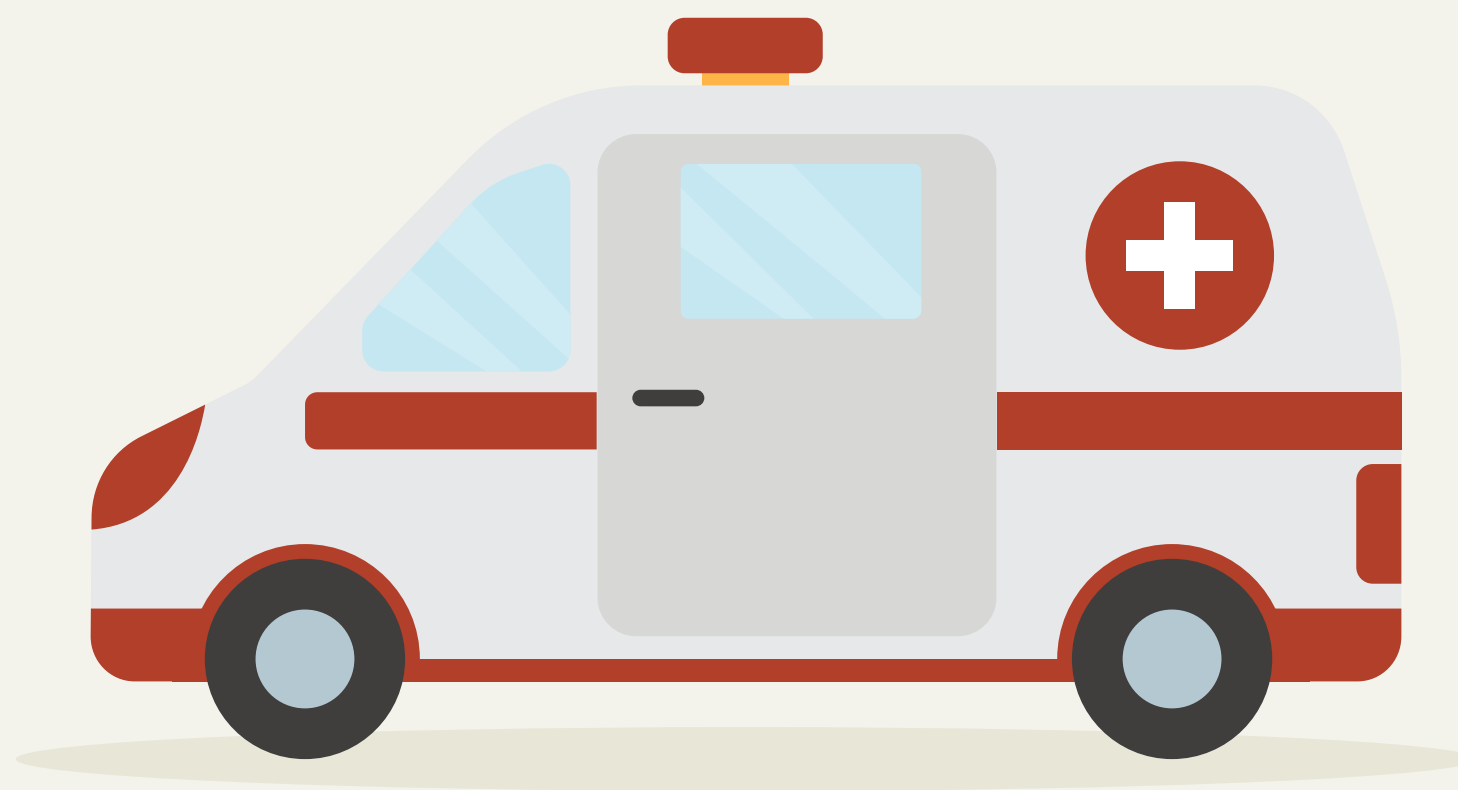
Based on UNFPA and WHO technical guidelines
For more information read the Covid-19 Technical Brief
for Maternity Services:



<https://www.unfpa.org/resources/covid-19-technical-brief-maternity-services>



ENSURE THAT VEHICLES USED TO TRANSPORT PREGNANT WOMEN ARE



Cleaned and disinfected internally by cleaning or transport staff in personal protective equipment (PPE) before the transfer between health facilities



Cleaned upon arrival when back at the health facility or at the transport depot



Internal equipment used during transportation should be cleaned and/or sterilised after transport as per facility protocol



Based on UNFPA and WHO technical guidelines
For more information read the Covid-19 Technical Brief for Maternity Services:



<https://www.unfpa.org/resources/covid-19-technical-brief-maternity-services>



GUIDELINES FOR HEALTHCARE TRANSPORT STAFF TO MANAGE PATIENT TRANSFER SAFELY



All transport staff should be provided with appropriate personal protective equipment (PPE)



On arrival at the health facility, transport staff should remove PPE and dispose of this as directed by facility protocol and wash hands



Transport staff will need to decontaminate and don new PPE prior to transporting another patient in a cleaned, decontaminated and resupplied vehicle



Staff should remove PPE in the nearest clinical area, for example ambulance bay, upon arrival back at the health facility at the end of the journey, and wash hands



Based on UNFPA and WHO technical guidelines. For more information read the Covid-19 Technical Brief for Maternity Services:



<https://www.unfpa.org/resources/covid-19-technical-brief-maternity-services>

